

# MONTHLY MEMBERSHIP PROGRESS REPORT

District 3234D1

Results as of: 4/30/2026

GMT:

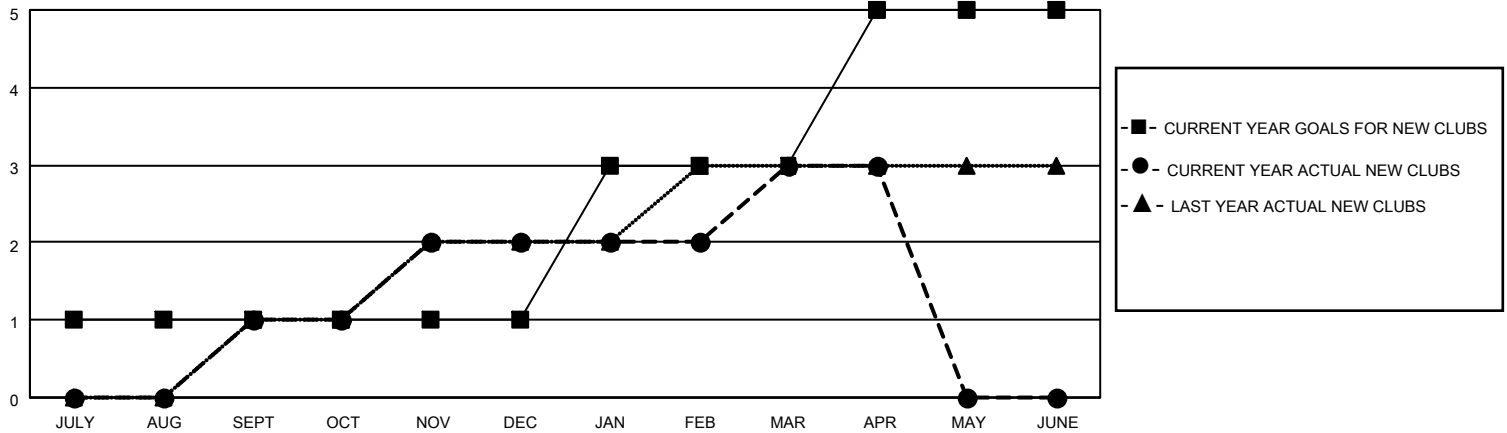
LOCATION INDIA

GMT CA

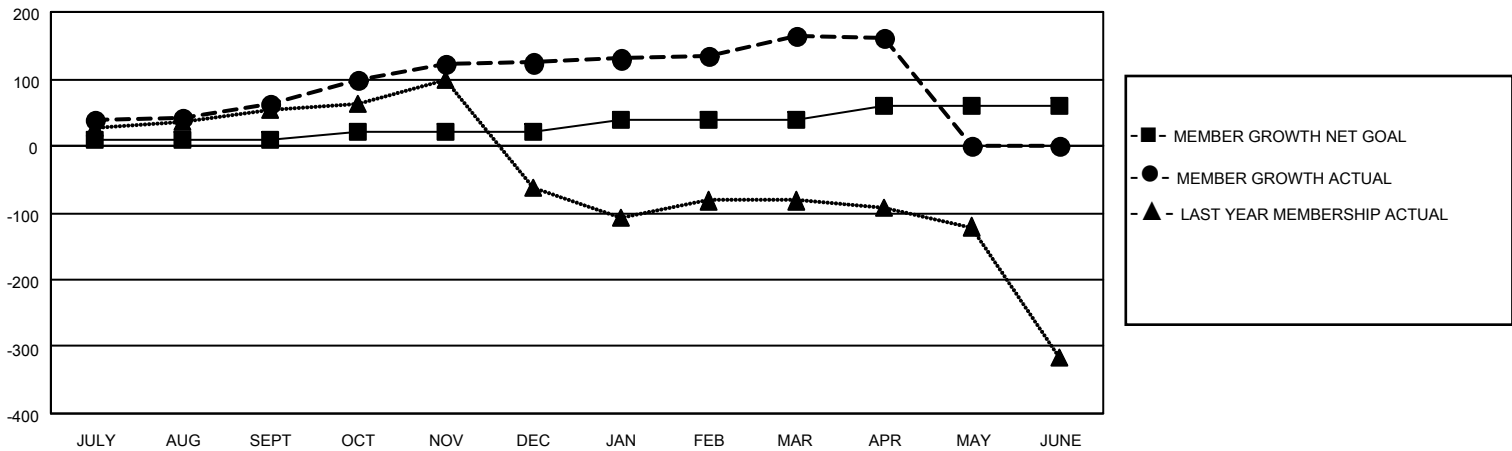
Clubs			
RESULTS FOR 2025-2026			
QUARTER	NEW CLUB GOAL	NEW CLUBS	DROPPED CLUBS
JULY/AUG/SEPT	1	1	1
OCT/NOV/DEC	0	1	2
JAN/FEB/MAR	2	1	0
APR/MAY/JUNE	2	0	0

Members			
RESULTS FOR 2025-2026			
QUARTER	MEMBER GROWTH NET GOAL	MEMBER GROWTH ACTUAL	DROPPED MEMBERS ACTUAL (including transfers)
JULY/AUG/SEPT	10	121	46
OCT/NOV/DEC	10	124	61
JAN/FEB/MAR	20	81	5
APR/MAY/JUNE	20	2	4

GOALS AND ACTUAL NEW CLUBS CUMULATIVE



GOALS AND ACTUAL MEMBERS CUMULATIVE



<b>DROPPED CLUBS: 3</b>	55 CLUBS OF 76 ADDED 1 OR MORE NEW MEMBERS	<b>GENDER DISTRIBUTION</b>	
		MALE 1,812 (70.18%)	FEMALE 770 (29.82%)
<b>DROPPED MEMBERS</b>		<a href="#">CLICK HERE FOR CUMULATIVE MEMBERSHIP DATA</a>	TOTAL FAMILY UNIT MEMBERS 903
DECEASED 2	CLUB CANCELLED 38		FAMILY MEMBERS PAYING HALF DUES 466
OTHER 76	TOTAL 116		